

1000PSI 1PC RP STAINLESS STEEL BALL VALVE



FIG.# 4E-410C8M16T-1P-RP

Sizes: 1/4" - 2" @1,000 PSI NSCWP

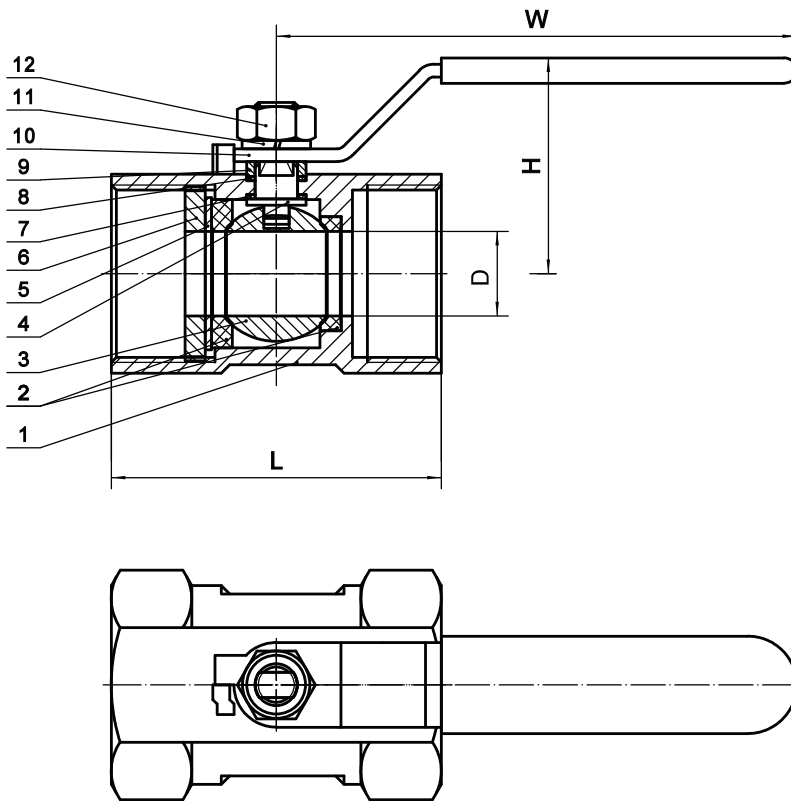
Full Stainless Steel, Blowout proof stem
NPT end connections, Locking Handle,
1-Piece Body (Uni-body), Reduced Port
NACE MR-0175 Compliant

Specifications Inspection and Test: API 598

Design & Manufacture: ASTM B16.34

NPT Threads Conforms to ANSI B1.20.1, BS21, DN 259/2999

| Performance Table | | |
|--------------------------------------------------|---------------------------------|------|
| Nominal Pressure | 1000 | PSI |
| Test Pressure | Strength Test | 10.4 |
| | Seal Test | 7.8 |
| | Air Seal Test | 0.6 |
| Working Temperature | - 29°C (- 20°F) ~ 163°C (325°F) | |
| Applicable Media: Water, Steam, Oil, Acetic Acid | | |



| MATERIAL LIST | | |
|---------------|---------------|----------|
| No. | Part Name | Material |
| 1. | Body | CF8M |
| 2. | Seat | PTFE |
| 3. | Ball | SS 316 |
| 4. | Stem | SS 316 |
| 5. | Gasket | SS 316 |
| 6. | End Cap | SS 316 |
| 7. | Thrust Washer | PTFE |
| 8. | Packing | PTFE |
| 9. | Packing Gland | SS |
| 10. | Handle | SS |
| 11. | Spring Washer | SS |
| 12. | Hex Nut | SS |

| DIMENSIONS | | | | | | | | | |
|------------|------|-------|-------|-------|-------|-------|--------|--------|-------|
| SIZE | unit | 1/4" | 3/8" | 1/2" | 3/4" | 1" | 1-1/4" | 1-1/2" | 2" |
| D | mm | 5.1 | 7.1 | 9.1 | 12.4 | 15.0 | 20.1 | 24.9 | 32.0 |
| | inch | 0.20 | 0.28 | 0.36 | 0.49 | 0.59 | 0.79 | 0.98 | 1.26 |
| L | mm | 39.9 | 43.9 | 56.9 | 60.0 | 71.1 | 78.0 | 82.0 | 101.1 |
| | inch | 1.57 | 1.73 | 2.24 | 2.36 | 2.80 | 3.07 | 3.23 | 3.98 |
| H | mm | 27.9 | 27.9 | 39.1 | 39.9 | 47.0 | 56.9 | 60.0 | 67.1 |
| | inch | 1.10 | 1.10 | 1.54 | 1.57 | 1.85 | 2.24 | 2.36 | 2.64 |
| W | mm | 70.1 | 71.9 | 89.9 | 95.0 | 106.9 | 118.1 | 136.9 | 150.1 |
| | inch | 2.76 | 2.83 | 3.54 | 3.74 | 4.21 | 4.65 | 5.39 | 5.91 |
| Weight | kg. | 0.06 | 0.09 | 0.15 | 0.23 | 0.34 | 0.55 | 0.71 | 1.12 |
| | lbs. | 0.141 | 0.198 | 0.326 | 0.518 | 0.75 | 1.213 | 1.565 | 2.469 |



Weights are approximate and construction is subject to change without notice.

| 4E Valve | www.4evalve.com | phone +1(281)494-4300 | fax +1(281)494-0090 | email joe@4evalve.com, jenny@4evalve.com, sales@4evalve.com |