

# 2000PSI 2PCS FP CAST STEEL BALL VALVE

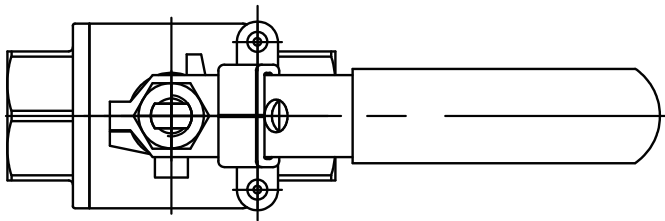
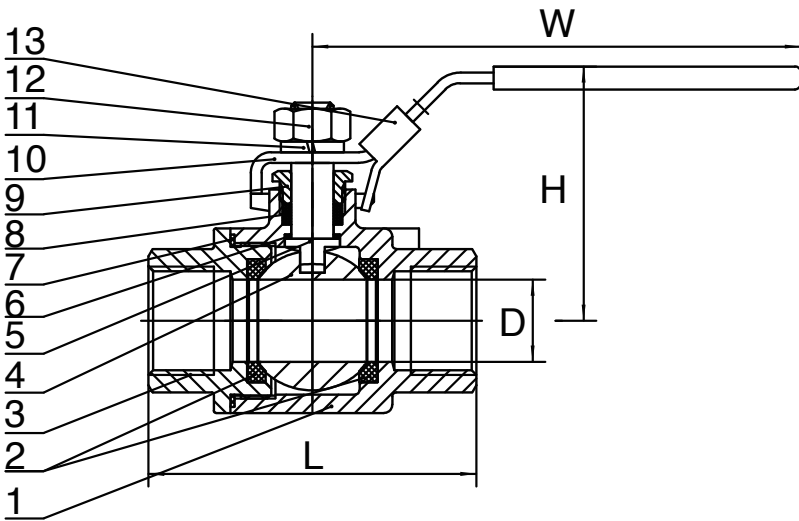


**FIG.# 4E-420WCB16T-2P-FP**

**Sizes: 1/4" - 2" @2,000 PSI NSCWP**

Cast Steel Body, Blowout proof stem  
 NPT end connections, Locking Handle,  
 Drilled and tapped mounting holes standard  
 Seal-Welded available\*, 2-piece Body, Full Port  
 NACE MR-0175 Compliant  
 Specifications Inspection and Test: API 598  
 Design & Manufacture: ASTM B16.34  
 NPT Threads Conforms to ANSI B1.20.1, BS21, DN 259/2999

Performance Table		
Nominal Pressure	2000	PSI
Test Pressure	Strength Test	20.7
	Seal Test	15.2
	Air Seal Test	0.6
Working Temperature	- 29°C (- 20°F) ~ 163°C (325°F)	
Applicable Media: Water, Steam, Oil, Acetic Acid		



## MATERIAL LIST

No.	Part Name	Material
1.	Body	A216 WCB
2.	Seat	RPTFE
3.	Bonnet	WCB
4.	Ball	SS 316
5.	Stem	SS 316
6.	Gasket	RPTFE
7.	Seal Ring	RPTFE
8.	Packing	PTFE
9.	Packing Gland	SS 304
10.	Handle	SS 201
11.	Spring Washer	SS 304
12.	Hex Nut	SS 201
13.	Locking Device	SS 201

\*Please specify when placing your purchase order. 4E has both Seal-Welded and non-Seal Welded available in stock.

## DIMENSIONS

SIZE	unit	1/4"	3/8"	1/2"	3/4"	1"	1-1/4"	1-1/2"	2"
D	mm	11.5	12.5	15.0	20.0	25.0	32.0	38.0	49.0
	inch	0.453	0.492	0.591	0.787	0.984	1.260	1.496	1.929
L	mm	62.0	62.0	64.0	72.0	90.0	102.0	115.0	135.0
	inch	2.441	2.441	2.520	2.835	3.543	4.016	4.528	5.315
H	mm	53.0	56.0	62.0	65.0	72.0	77.0	94.0	101.0
	inch	2.087	2.205	2.441	2.559	2.835	3.031	3.701	3.976
W	mm	95.0	107.0	101.0	119.0	145.0	148.0	160.0	180.
	inch	3.740	4.213	3.976	4.685	5.709	5.827	6.299	7.087
Weight	kg.	0.33	0.32	0.40	0.57	0.95	1.40	2.17	3.80
	lbs.	0.728	0.705	0.882	1.257	2.105	3.086	4.784	8.378



Weights are approximate and construction is subject to change without notice.

| 4E Valve | www.4evalve.com | phone +1(281)494-4300 | fax +1(281)494-0090 | email joe@4evalve.com, jenny@4evalve.com, sales@4evalve.com |