



3000 PSI CAST STEEL SWING CHECK VALVE

CSCV

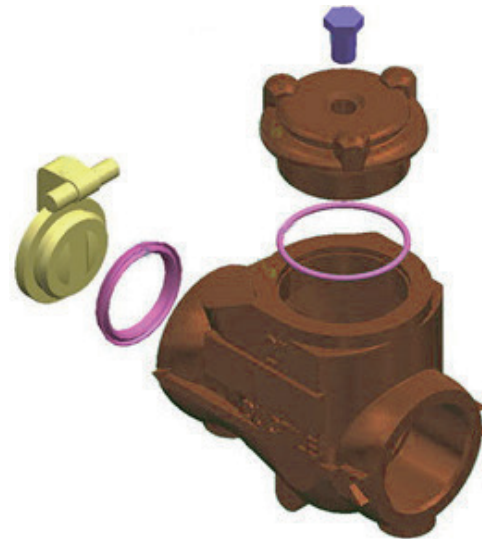
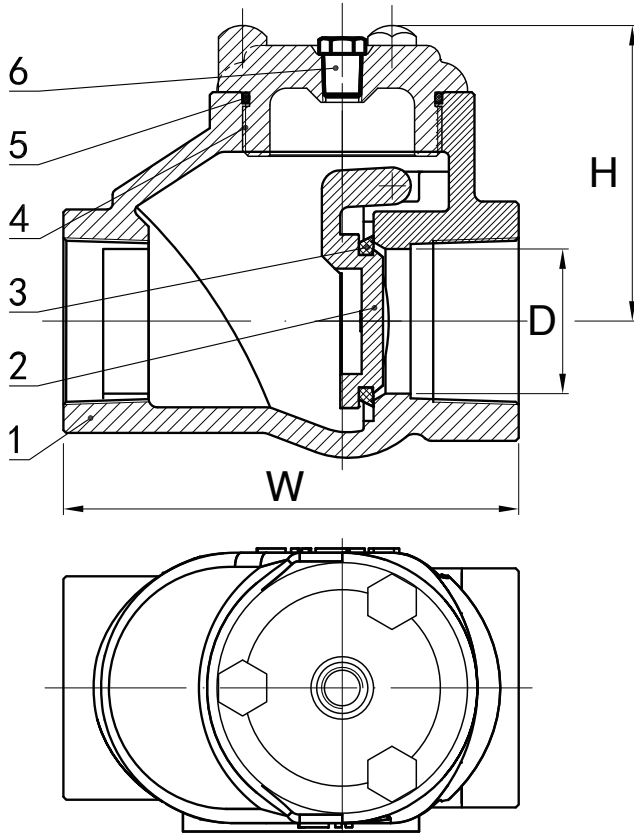
FIG.# 4E-330WCB-T

Cast Steel Body
 Swing Check
 Up to 3000 W.O.G.
 Full Opening
 NACE MR-0175 Compliant
 Groove End Customized

Nominal Pressure	3000	PSI
Shell Test (by Water)	4500	
Seal Test (by Water)	3300	
Seal Test (by Air)	60 ~ 100	
Threads conforms to	ANSI B1.20.1 BS21 DN 259/2999	
Temperature Range	-10°C (14°F) ~ 80°C (176°F)	

MATERIAL LIST

No.	Part Name	Material
1.	Body	A216 WCB
2.	Disk	CF8
3.	Seat	VITON
4.	Bonnet	A216 WCB
5.	Gasket	VITON
6.	Pipe Plug	Steel



DIMENSIONS & WEIGHT

SIZE	unit	1" FP	2" FP	2"-Long FP	3" FP	4" FP
		CSCV25 3000 PSI	CSCV50 3000 PSI	CSCVL50 3000 PSI	CSCV80 3000 PSI	CSCV100 3000 PSI
D	inch	1	1.98	1.98	3.03	3.98
	mm	25.4	50.8	50.8	77	101
W	inch	4.25	6.30	7.24	8.74	10.00
	mm	108	160	184	222	254
H	inch	3.23	4.09	5.35	5.35	7.79
	mm	82	104	136	136	198
WT.	lbs.	5.18	14.33	15.76	27.79	66.14
	kgs.	2.35	6.5	7.15	12.6	30

